

## \$192,500 - 1124 9363 Simpson Drive, Edmonton

MLS® #E4430437

**\$192,500**

2 Bedroom, 2.00 Bathroom, 1,001 sqft

Condo / Townhouse on 0.00 Acres

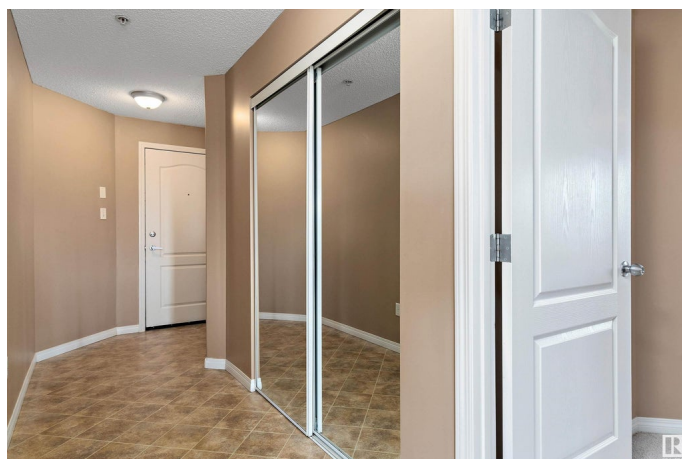
South Terwillegar, Edmonton, AB

Large 1000 sq ft CORNER SUITE! Freshly painted unit is located in popular Terwillegar, and features 2 bed and 2 bath. One of the largest suites in building that has more room to enjoy, and is surrounded by large windows bringing in tons of natural light. OPEN FLOOR PLAN with lots of counter space and cabinets in kitchen with a huge peninsula with seating for 4. Larger dining space than most units make entertaining much easier. Spacious living room has access to the PRIVATE corner balcony with south exposure. Primary suite has a walk thru closet and 4 piece bath. Another 4 piece bath and second bedroom are on the other side of the unit. Big laundry/storage room and beautiful foyer. This main floor condo is in an excellent southside location with easy access to Anthony Henday, close to amazing schools, playgrounds, Windermere Currents shopping centre and more.

Built in 2008

### Essential Information

MLS® #	E4430437
Price	\$192,500
Bedrooms	2
Bathrooms	2.00
Full Baths	2



Square Footage	1,001
Acres	0.00
Year Built	2008
Type	Condo / Townhouse
Sub-Type	Lowrise Apartment
Style	Single Level Apartment
Status	Active

### Community Information

Address	1124 9363 Simpson Drive
Area	Edmonton
Subdivision	South Terwillegar
City	Edmonton
County	ALBERTA
Province	AB
Postal Code	T6R 0N2

### Amenities

Amenities	No Animal Home, No Smoking Home, Parking-Extra, Parking-Visitor, Security Door, Vinyl Windows
Parking	Stall

### Interior

Interior Features	ensuite bathroom
Appliances	Dishwasher-Built-In, Dryer, Hood Fan, Refrigerator, Stove-Electric, Washer, Window Coverings
Heating	In Floor Heat System, Natural Gas
# of Stories	4
Stories	1
Has Basement	Yes
Basement	None, No Basement

### Exterior

Exterior	Wood, Stone, Vinyl
Exterior Features	Airport Nearby, Fenced, Flat Site, Landscaped, Playground Nearby, Public Swimming Pool, Public Transportation, Schools, Shopping Nearby
Roof	Asphalt Shingles
Construction	Wood, Stone, Vinyl

Foundation                      Concrete Perimeter

**School Information**

Elementary                      ester starkman  
Middle                            ester starkman  
High                                lillian osbourne

**Additional Information**

Date Listed                      April 11th, 2025  
Days on Market                30  
Zoning                             Zone 14  
Condo Fee                        \$666

DATA IS DEEMED RELIABLE BUT IS NOT GUARANTEED ACCURATE BY THE REALTORS® ASSOCIATION OF EDMONTON. COPYRIGHT 2025 BY THE REALTORS® ASSOCIATION OF EDMONTON. ALL RIGHTS RESERVED.Trademarks are owned or controlled by the Canadian Real Estate Association (CREA) and identify real estate professionals who are members of CREA (REALTOR®, REALTORS®) and/or the quality of services they provide (MLS®, Multiple Listing Service®)  
Listing information last updated on May 11th, 2025 at 7:02am MDT