

\$515,410 - 730 Payipwat Common, Edmonton

MLS® #E4431119

\$515,410

3 Bedroom, 2.50 Bathroom, 1,680 sqft

Single Family on 0.00 Acres

Paisley, Edmonton, AB

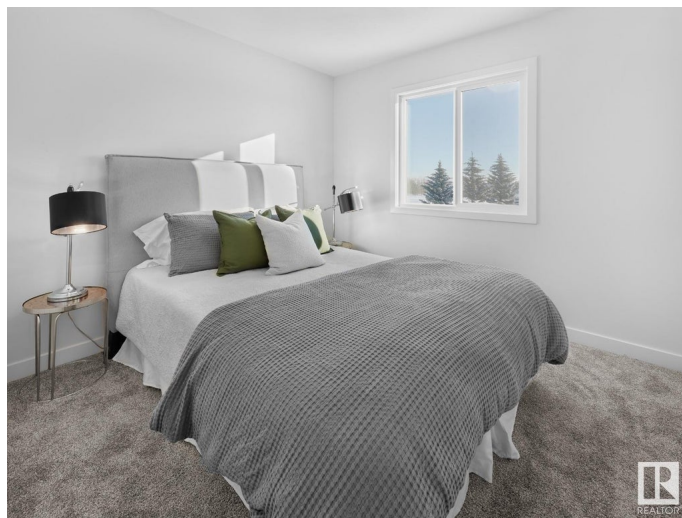
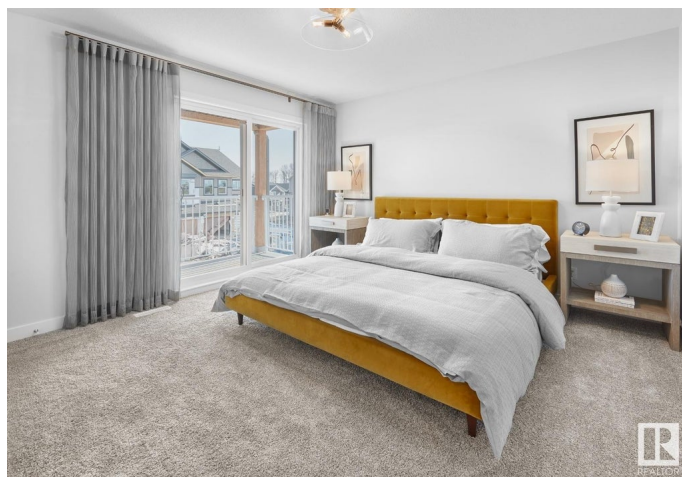
Visit the Listing Brokerage (and/or listing REALTOR®) website to obtain additional information. This beautifully designed BROOKFIELD home on a corner-lot combines elegance, functionality, and future-ready features. With extra windows in the living room and stairwell, 10'™ ceilings, and a 50" electric fireplace, the main floor feels open and full of natural light. The designer kitchen includes a chimney hood fan, stainless steel appliances, and quartz countertops throughout, while a stunning estate-style curved staircase with spindle railing adds architectural charm. Upstairs, the spacious primary suite features a dual sink vanity, enclosed water closet, and upgraded shower with seat. The home is built for future flexibility with 8/9 ft basement ceilings, two basement windows, and an enclosed side entrance for future development. Complete with front landscaping, a 20x20 parking pad. PLEASE NOTE: Photos, Video and Virtual Tour are of a similar model and not fully representative of this home.

Built in 2025

Essential Information

MLS® # E4431119

Price \$515,410



Bedrooms	3
Bathrooms	2.50
Full Baths	2
Half Baths	1
Square Footage	1,680
Acres	0.00
Year Built	2025
Type	Single Family
Sub-Type	Detached Single Family
Style	2 Storey
Status	Active

Community Information

Address	730 Payipwat Common
Area	Edmonton
Subdivision	Paisley
City	Edmonton
County	ALBERTA
Province	AB
Postal Code	T6W 5K8

Amenities

Amenities	Ceiling 10 ft., No Animal Home, No Smoking Home, See Remarks
Parking	Parking Pad Cement/Paved

Interior

Interior Features	ensuite bathroom
Appliances	Dishwasher-Built-In, Hood Fan, Refrigerator, Stove-Electric, See Remarks
Heating	Forced Air-1, Natural Gas
Fireplace	Yes
Fireplaces	Insert
Stories	2
Has Basement	Yes
Basement	Full, Unfinished

Exterior

Exterior	Wood, Stone, Vinyl
Exterior Features	Landscaped

Roof	Asphalt Shingles
Construction	Wood, Stone, Vinyl
Foundation	Concrete Perimeter

Additional Information

Date Listed	April 14th, 2025
Days on Market	19
Zoning	Zone 55

DATA IS DEEMED RELIABLE BUT IS NOT GUARANTEED ACCURATE BY THE REALTORS® ASSOCIATION OF EDMONTON. COPYRIGHT 2025 BY THE REALTORS® ASSOCIATION OF EDMONTON. ALL RIGHTS RESERVED.Trademarks are owned or controlled by the Canadian Real Estate Association (CREA) and identify real estate professionals who are members of CREA (REALTOR®, REALTORS®) and/or the quality of services they provide (MLS®, Multiple Listing Service®)

Listing information last updated on May 3rd, 2025 at 9:47am MDT