

\$689,000 - 10822 66 Avenue, Edmonton

MLS® #E4438841

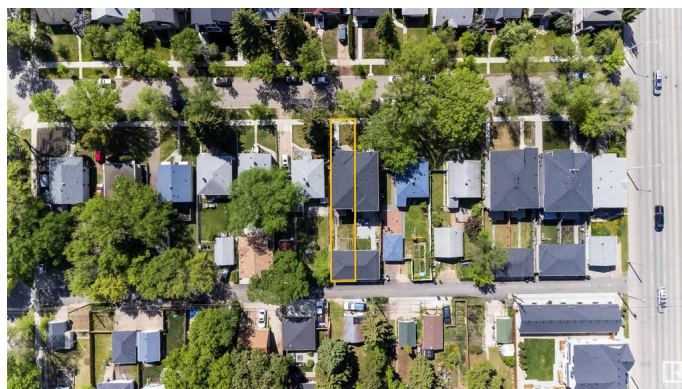
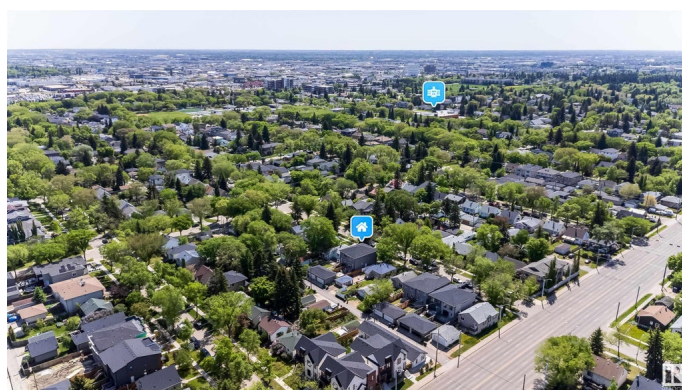
\$689,000

5 Bedroom, 3.50 Bathroom, 1,666 sqft

Single Family on 0.00 Acres

Allendale, Edmonton, AB

Welcome to Allendale in the U of A area â€” a modern 2-storey newer half duplex with everything on your wish list, including A/C, a double detached garage and a LEGAL 2-bdrm basement suite. Set on a quiet, tree-lined street, this home features a smart, open-concept layout that maximizes space and style. Inside, you'll find upscale details like wide-plank engineered hardwood, quartz countertops, premium S/S appliances, and upstairs laundry for added convenience. The LAGEL basement with Side Entrance offers even more flexibility â€” with kitchen, 2 bdrms, a full bath, and a living area, itâ€™s perfect for rental income to help offset your mortgage. Complete with 5 total bdrms, 3.5 baths, a landscaped yard, and a sunny rear deck, this property is move-in ready and ideally located near schools, the UofA, and public transit. Whether youâ€™re looking to live in, rent out, or both â€” this is the opportunity youâ€™ve been waiting for.



Built in 2019

Essential Information

MLS® #	E4438841
Price	\$689,000
Bedrooms	5
Bathrooms	3.50

Full Baths	3
Half Baths	1
Square Footage	1,666
Acres	0.00
Year Built	2019
Type	Single Family
Sub-Type	Half Duplex
Style	2 Storey
Status	Active

Community Information

Address	10822 66 Avenue
Area	Edmonton
Subdivision	Allendale
City	Edmonton
County	ALBERTA
Province	AB
Postal Code	T6H 1X9

Amenities

Amenities	Air Conditioner, Ceiling 9 ft., Deck, Guest Suite, No Animal Home, No Smoking Home, Tennis Courts, Infill Property, HRV System
Parking Spaces	2
Parking	Double Garage Detached

Interior

Interior Features	ensuite bathroom
Appliances	Air Conditioning-Central, Dishwasher-Built-In, Dryer, Garage Control, Garage Opener, Hood Fan, Microwave Hood Fan, Oven-Built-In, Oven-Microwave, Stacked Washer/Dryer, Stove-Countertop Electric, Stove-Electric, Washer, Refrigerators-Two
Heating	Forced Air-2, Natural Gas
Stories	3
Has Suite	Yes
Has Basement	Yes
Basement	Full, Finished

Exterior

Exterior	Wood, Composition, Vinyl, Stucco
----------	----------------------------------

Exterior Features	Back Lane, Fenced, Flat Site, Landscaped, Playground Nearby, Public Transportation, Schools, Shopping Nearby
Roof	Asphalt Shingles
Construction	Wood, Composition, Vinyl, Stucco
Foundation	Concrete Perimeter

Additional Information

Date Listed	May 28th, 2025
Days on Market	20
Zoning	Zone 15

DATA IS DEEMED RELIABLE BUT IS NOT GUARANTEED ACCURATE BY THE REALTORS® ASSOCIATION OF EDMONTON. COPYRIGHT 2025 BY THE REALTORS® ASSOCIATION OF EDMONTON. ALL RIGHTS RESERVED.Trademarks are owned or controlled by the Canadian Real Estate Association (CREA) and identify real estate professionals who are members of CREA (REALTOR®, REALTORS®) and/or the quality of services they provide (MLS®, Multiple Listing Service®)

Listing information last updated on June 16th, 2025 at 11:22pm MDT