

Courtesy Of Brent Anderson Of Century 21 Masters

## \$485,000 - 5443 Crabapple Loop, Edmonton

MLS® #E4440441

**\$485,000**

3 Bedroom, 2.50 Bathroom, 1,747 sqft

Single Family on 0.00 Acres

The Orchards At Ellerslie, Edmonton, AB

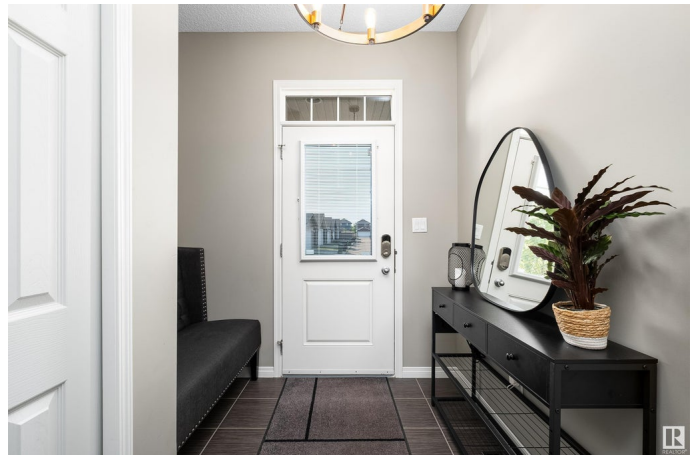
This absolutely stunning 1,747 sqft duplex is move-in ready and this gem located in the desirable community of The Orchards. Immaculately maintained, this beautiful home offers a perfect blend of comfort + style, making it an ideal choice for families + individuals alike. The open concept main floor is designed for modern living + entertaining. It boasts, enormous island, ample cabinetry + counter space, walk-in pantry, large living room with electric fireplace to enjoy during the cooler evenings. Step outside to enjoy the exquisite outdoor area, featuring a beautiful deck with gazebo + privacy curtains + natural gas hookup for BBQ + fire table. The upper level of this home offers large bonus room, a versatile space that can be used as a family room, office, or play area, primary bedroom with walk-in closet + 4-piece ensuite, two additional nicely sized bedrooms + 4 piece bathroom and laundry room. Other features, Custom window coverings and Central AC. Room to grow with the unfinished basement space.

Built in 2014

### Essential Information

MLS® # E4440441

Price \$485,000



|                |               |
|----------------|---------------|
| Bedrooms       | 3             |
| Bathrooms      | 2.50          |
| Full Baths     | 2             |
| Half Baths     | 1             |
| Square Footage | 1,747         |
| Acres          | 0.00          |
| Year Built     | 2014          |
| Type           | Single Family |
| Sub-Type       | Half Duplex   |
| Style          | 2 Storey      |
| Status         | Active        |

### Community Information

|             |                           |
|-------------|---------------------------|
| Address     | 5443 Crabapple Loop       |
| Area        | Edmonton                  |
| Subdivision | The Orchards At Ellerslie |
| City        | Edmonton                  |
| County      | ALBERTA                   |
| Province    | AB                        |
| Postal Code | T6X 1S5                   |

### Amenities

|                |                                               |
|----------------|-----------------------------------------------|
| Amenities      | Deck, Detectors Smoke, Natural Gas BBQ Hookup |
| Parking Spaces | 1                                             |
| Parking        | Single Garage Attached                        |

### Interior

|                   |                                                                                                                                                                                                                           |
|-------------------|---------------------------------------------------------------------------------------------------------------------------------------------------------------------------------------------------------------------------|
| Interior Features | ensuite bathroom                                                                                                                                                                                                          |
| Appliances        | Air Conditioning-Central, Dishwasher-Built-In, Dryer, Garage Control, Garage Opener, Microwave Hood Fan, Refrigerator, Stove-Electric, Vacuum System Attachments, Vacuum Systems, Washer, Window Coverings, TV Wall Mount |
| Heating           | Forced Air-1, Natural Gas                                                                                                                                                                                                 |
| Fireplace         | Yes                                                                                                                                                                                                                       |
| Fireplaces        | Glass Door, Insert                                                                                                                                                                                                        |
| Stories           | 2                                                                                                                                                                                                                         |
| Has Basement      | Yes                                                                                                                                                                                                                       |
| Basement          | Full, Unfinished                                                                                                                                                                                                          |

### Exterior

|                   |                                                                                                                                |
|-------------------|--------------------------------------------------------------------------------------------------------------------------------|
| Exterior          | Wood, Vinyl                                                                                                                    |
| Exterior Features | Airport Nearby, Fenced, Flat Site, Golf Nearby, Landscaped, Playground Nearby, Public Transportation, Schools, Shopping Nearby |
| Roof              | Asphalt Shingles                                                                                                               |
| Construction      | Wood, Vinyl                                                                                                                    |
| Foundation        | Concrete Perimeter                                                                                                             |

### School Information

|            |                      |
|------------|----------------------|
| Elementary | Jan Reimer School    |
| Middle     | Jan Reimer School    |
| High       | J. Percy Page School |

### Additional Information

|                |                |
|----------------|----------------|
| Date Listed    | June 5th, 2025 |
| Days on Market | 12             |
| Zoning         | Zone 53        |
| HOA Fees       | 450            |
| HOA Fees Freq. | Annually       |

DATA IS DEEMED RELIABLE BUT IS NOT GUARANTEED ACCURATE BY THE REALTORS® ASSOCIATION OF EDMONTON. COPYRIGHT 2025 BY THE REALTORS® ASSOCIATION OF EDMONTON. ALL RIGHTS RESERVED. Trademarks are owned or controlled by the Canadian Real Estate Association (CREA) and identify real estate professionals who are members of CREA (REALTOR®, REALTORS®) and/or the quality of services they provide (MLS®, Multiple Listing Service®)

Listing information last updated on June 16th, 2025 at 10:17pm MDT