

Courtesy Of Shelly D Reddy Of Royal Lepage Arteam Realty

\$299,000 - 24 6075 Schonsee Way, Edmonton

MLS® #E4453033

\$299,000

3 Bedroom, 2.50 Bathroom, 1,265 sqft
Condo / Townhouse on 0.00 Acres

Schonsee, Edmonton, AB

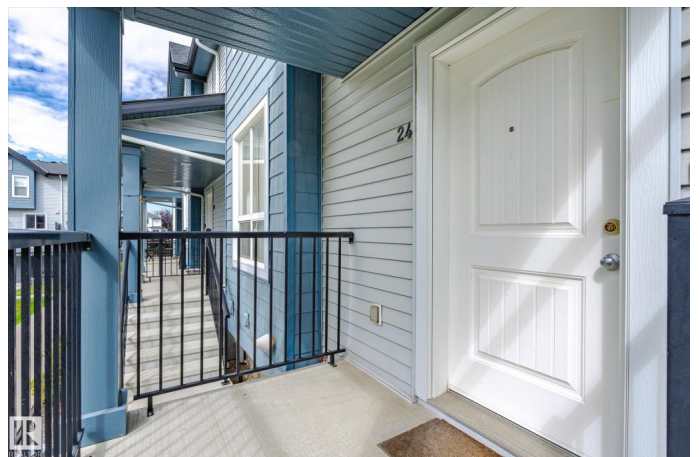
Discover this spacious, bright, and well planned out townhouse ideally situated near K-9 schools, community rec centers, shopping outlets, restaurants, coffee shops, Anthony Henday, and more. Perfectly designed for comfort, convenience, and style with 3 bedrooms and 2.5 bathrooms. The main floor offers open concept living with large windows for abundant natural sunlight, large family room with a 2 pc. bathroom, dining area and a large kitchen with an eating bar, quality cabinets, stainless steel appliances including over-the-range microwave and generous counter space. The private upper level offers a large primary suite with ensuite bathroom, plus two additional bedrooms and a second full guest bathroom. There is a huge balcony off the main floor kitchen and it has a gas outlet for your B.B.Q. The front is south exposure and opens up to a huge communal green space perfect for summer evenings, walking your family pet and playing children. If your looking for a perfect turn key family home this is it!

Built in 2010

Essential Information

MLS® # E4453033

Price \$299,000



Bedrooms	3
Bathrooms	2.50
Full Baths	2
Half Baths	1
Square Footage	1,265
Acres	0.00
Year Built	2010
Type	Condo / Townhouse
Sub-Type	Townhouse
Style	2 Storey
Status	Active

Community Information

Address	24 6075 Schonsee Way
Area	Edmonton
Subdivision	Schonsee
City	Edmonton
County	ALBERTA
Province	AB
Postal Code	T5Z 0H4

Amenities

Amenities	No Animal Home, No Smoking Home, Parking-Visitor
Parking	Double Garage Attached

Interior

Interior Features	ensuite bathroom
Appliances	Dishwasher-Built-In, Dryer, Garage Control, Garage Opener, Microwave Hood Fan, Refrigerator, Stove-Electric
Heating	Forced Air-1, Natural Gas
Stories	2
Has Basement	Yes
Basement	Full, Unfinished

Exterior

Exterior	Wood, Vinyl
Exterior Features	Back Lane, Landscaped, Low Maintenance Landscape, No Through Road, Playground Nearby, Public Transportation, Schools, Shopping Nearby

Roof	Asphalt Shingles
Construction	Wood, Vinyl
Foundation	Concrete Perimeter

Additional Information

Date Listed	August 14th, 2025
Days on Market	6
Zoning	Zone 28
Condo Fee	\$372

DATA IS DEEMED RELIABLE BUT IS NOT GUARANTEED ACCURATE BY THE REALTORS® ASSOCIATION OF EDMONTON. COPYRIGHT 2025 BY THE REALTORS® ASSOCIATION OF EDMONTON. ALL RIGHTS RESERVED. Trademarks are owned or controlled by the Canadian Real Estate Association (CREA) and identify real estate professionals who are members of CREA (REALTOR®, REALTORS®) and/or the quality of services they provide (MLS®, Multiple Listing Service®)

Listing information last updated on August 20th, 2025 at 1:17am MDT