

\$420,000 - 12210 176 Avenue, Edmonton

MLS® #E4457714

\$420,000

3 Bedroom, 2.50 Bathroom, 1,463 sqft
Single Family on 0.00 Acres

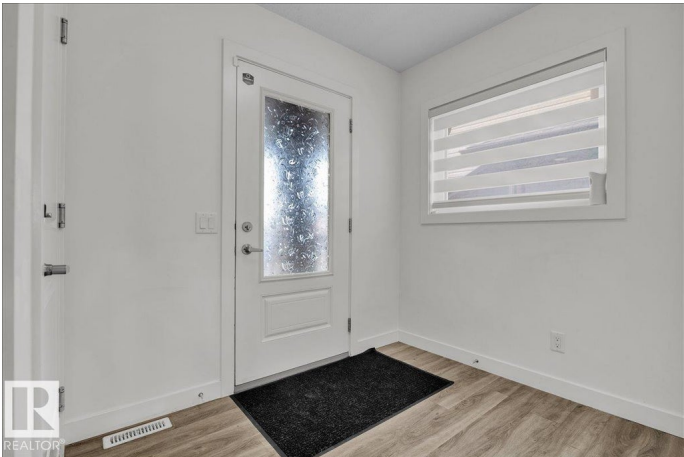
Rapperswill, Edmonton, AB

Original Owner Home on a Quiet Street in Rapperswill! This beautifully maintained home offers a bright, open layout with an abundance of natural light from large rear-facing windows and glass patio doors. The modern white kitchen features floor-to-ceiling cabinetry, quartz countertops, and stainless steel appliances. Perfect for everyday living and entertaining. The vinyl plank flooring and crisp white walls create a clean, luxurious feel throughout the main level. Upstairs, youâ€™™ll find two generously sized bedrooms, convenient upper-floor laundry, and a spacious primary suite complete with a walk-in closet and a 4-piece ensuite. Additional highlights include a single attached garage and a private, fully fenced backyard with a wood deck. Ideal for hosting guests in the summer. Only minutes away from shopping, restaurants, Movati, walking trails & MORE! You can't beat this location!

Built in 2017

Essential Information

MLS® #	E4457714
Price	\$420,000
Bedrooms	3
Bathrooms	2.50
Full Baths	2



Half Baths	1
Square Footage	1,463
Acres	0.00
Year Built	2017
Type	Single Family
Sub-Type	Half Duplex
Style	2 Storey
Status	Active

Community Information

Address	12210 176 Avenue
Area	Edmonton
Subdivision	Rapperswill
City	Edmonton
County	ALBERTA
Province	AB
Postal Code	T5X 0L2

Amenities

Amenities	Closet Organizers, Deck
Parking Spaces	2
Parking	Single Garage Attached

Interior

Interior Features	ensuite bathroom
Appliances	Dishwasher-Built-In, Garage Control, Garage Opener, Oven-Microwave, Refrigerator, Stove-Electric, Window Coverings
Heating	Forced Air-1, Natural Gas
Stories	2
Has Basement	Yes
Basement	Full, Unfinished

Exterior

Exterior	Wood, Vinyl
Exterior Features	Playground Nearby, Public Transportation, Recreation Use, Schools, Shopping Nearby
Roof	Asphalt Shingles
Construction	Wood, Vinyl
Foundation	Concrete Perimeter

School Information

Elementary	Baturyn/St. Lucy
Middle	Mary Butterworth/Sir John
High	Queen Eliz./Archbishop O'L

Additional Information

Date Listed	September 13th, 2025
Days on Market	1
Zoning	Zone 27

DATA IS DEEMED RELIABLE BUT IS NOT GUARANTEED ACCURATE BY THE REALTORS® ASSOCIATION OF EDMONTON. COPYRIGHT 2025 BY THE REALTORS® ASSOCIATION OF EDMONTON. ALL RIGHTS RESERVED.Trademarks are owned or controlled by the Canadian Real Estate Association (CREA) and identify real estate professionals who are members of CREA (REALTOR®, REALTORS®) and/or the quality of services they provide (MLS®, Multiple Listing Service®)

Listing information last updated on September 14th, 2025 at 4:02am MDT