

## \$485,000 - 126 Abbey Road, Sherwood Park

MLS® #E4457844

**\$485,000**

3 Bedroom, 3.50 Bathroom, 1,544 sqft

Single Family on 0.00 Acres

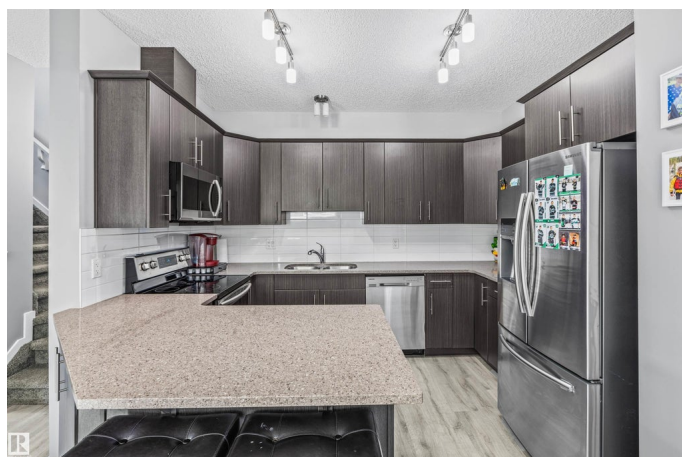
Aspen Trails, Sherwood Park, AB

Beautifully updated and move-in ready, this 3-bedroom, 4-bathroom half duplex offers style, space, and functionality, with no condo fees! The open-concept main floor features luxury vinyl plank flooring, fresh paint, quartz countertops, and stainless steel appliances. Upstairs, the spacious primary bedroom includes a walk-in closet and full 3 piece ensuite. Two additional bedrooms, laundry and a 4-piece bath complete the upper level. The fully finished basement includes a large rec room, full bathroom, and extra storage, ideal for movie nights, guests, or a home gym. Enjoy the convenience of a double attached garage, high ceilings, and a fully landscaped yard with deck, perfect for summer entertaining. Whether you're a first-time buyer or looking for low-maintenance living without sacrificing space, this home checks all the boxes. Located in a quiet, family-friendly neighborhood close to parks, schools, and shopping.

Built in 2017

### Essential Information

MLS® #	E4457844
Price	\$485,000
Bedrooms	3
Bathrooms	3.50



Full Baths	3
Half Baths	1
Square Footage	1,544
Acres	0.00
Year Built	2017
Type	Single Family
Sub-Type	Half Duplex
Style	2 Storey
Status	Active

### Community Information

Address	126 Abbey Road
Area	Sherwood Park
Subdivision	Aspen Trails
City	Sherwood Park
County	ALBERTA
Province	AB
Postal Code	T8A 1A5

### Amenities

Amenities	Air Conditioner, Closet Organizers, Deck, No Animal Home, No Smoking Home, Vinyl Windows, See Remarks
Parking	Double Garage Attached

### Interior

Interior Features	ensuite bathroom
Appliances	Dishwasher-Built-In, Dryer, Refrigerator, Stove-Electric, Washer, Window Coverings
Heating	Forced Air-1, Natural Gas
Stories	3
Has Basement	Yes
Basement	Full, Finished

### Exterior

Exterior	Wood, Vinyl
Exterior Features	Fenced, Flat Site, Landscaped, Level Land, Low Maintenance Landscape, No Back Lane, Playground Nearby, Public Transportation, Schools, Shopping Nearby, See Remarks
Roof	Asphalt Shingles

Construction	Wood, Vinyl
Foundation	Concrete Perimeter

**Additional Information**

Date Listed	September 15th, 2025
Zoning	Zone 25

DATA IS DEEMED RELIABLE BUT IS NOT GUARANTEED ACCURATE BY THE REALTORS® ASSOCIATION OF EDMONTON. COPYRIGHT 2025 BY THE REALTORS® ASSOCIATION OF EDMONTON. ALL RIGHTS RESERVED.Trademarks are owned or controlled by the Canadian Real Estate Association (CREA) and identify real estate professionals who are members of CREA (REALTOR®, REALTORS®) and/or the quality of services they provide (MLS®, Multiple Listing Service®)

Listing information last updated on September 15th, 2025 at 5:02pm MDT