

\$198,000 - 1437 9363 Simpson Drive, Edmonton

MLS® #E4458487

\$198,000

2 Bedroom, 2.00 Bathroom, 834 sqft

Condo / Townhouse on 0.00 Acres

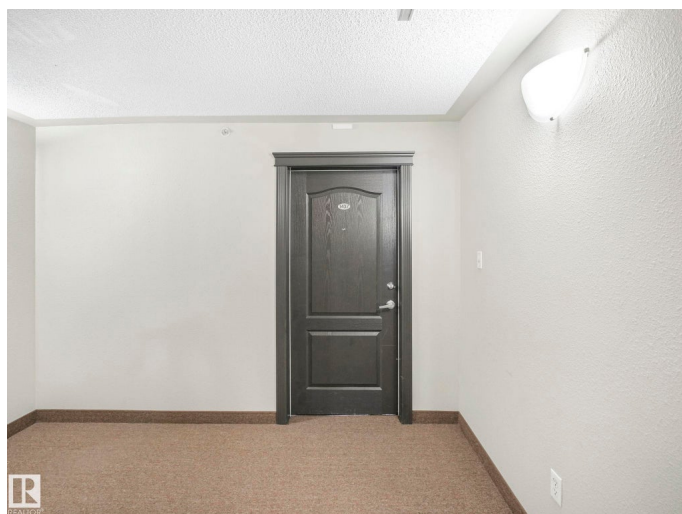
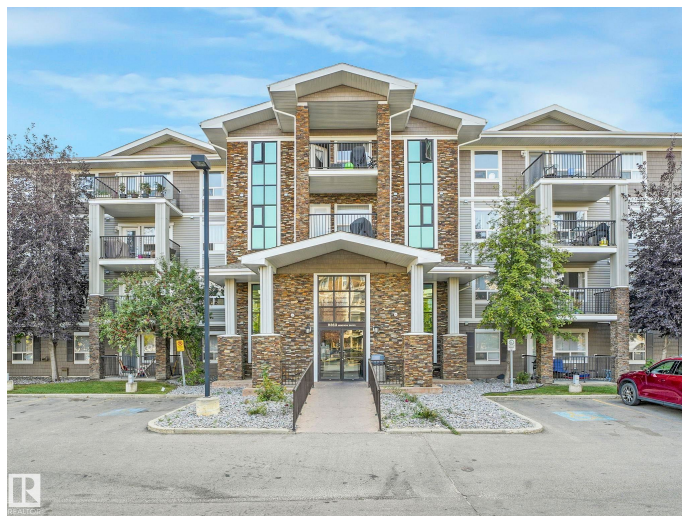
South Terwillegar, Edmonton, AB

Time to enjoy this bright and spacious top floor, 832 sqft, two bedroom, two full bath condo. Huge windows and vaulted ceilings allowing ton of natural light throughout! Conveniently located in a desirable location with easy access to Anthony Henday all the shopping SW Edmonton has to offer. Condo fee includes heat, water, and TWO titled parking stall next to the door! There is no shortage of space with a large storage room, laundry room and large balcony off of the living room. Additionally enjoy the building amenities including a social room and gym!

Built in 2008

Essential Information

MLS® #	E4458487
Price	\$198,000
Bedrooms	2
Bathrooms	2.00
Full Baths	2
Square Footage	834
Acres	0.00
Year Built	2008
Type	Condo / Townhouse
Sub-Type	Lowrise Apartment
Style	Single Level Apartment
Status	Active



Community Information

Address	1437 9363 Simpson Drive
Area	Edmonton
Subdivision	South Terwillegar
City	Edmonton
County	ALBERTA
Province	AB
Postal Code	T6R 0N2

Amenities

Amenities	Off Street Parking, Exercise Room, No Animal Home, No Smoking Home, Parking-Plug-Ins, Security Door, Vinyl Windows, See Remarks
Parking Spaces	2
Parking	2 Outdoor Stalls, See Remarks

Interior

Interior Features	ensuite bathroom
Appliances	Dishwasher-Built-In, Dryer, Hood Fan, Refrigerator, Stove-Electric, Washer, Window Coverings, See Remarks
Heating	In Floor Heat System, Natural Gas
# of Stories	4
Stories	1
Has Basement	Yes
Basement	None, No Basement

Exterior

Exterior	Wood, Stone, Vinyl
Exterior Features	Airport Nearby, Flat Site, Landscaped, Playground Nearby, Public Swimming Pool, Public Transportation, Schools, Shopping Nearby, See Remarks
Roof	Asphalt Shingles
Construction	Wood, Stone, Vinyl
Foundation	Slab

Additional Information

Date Listed	September 18th, 2025
Days on Market	1
Zoning	Zone 14
Condo Fee	\$594

DATA IS DEEMED RELIABLE BUT IS NOT GUARANTEED ACCURATE BY THE REALTORS® ASSOCIATION OF EDMONTON. COPYRIGHT 2025 BY THE REALTORS® ASSOCIATION OF EDMONTON. ALL RIGHTS RESERVED.Trademarks are owned or controlled by the Canadian Real Estate Association (CREA) and identify real estate professionals who are members of CREA (REALTOR®, REALTORS®) and/or the quality of services they provide (MLS®, Multiple Listing Service®)

Listing information last updated on September 19th, 2025 at 7:47am MDT